



Caravel

Database Creation Procedure



© Copyright 2006 TransTOOLS, S.A. All rights reserved.

Information contained in this document is subject to changes without prior notice. These changes will be incorporated in new editions of the document.

Java and all Java-based trademarks are trademarks of Sun Microsystems, Inc., in the United States, other countries or both.

Every company name, product name, or service name may be trademarks or service marks of their respective owners.

Document: database creation procedure db2 20040407 v2 en.doc

Version: 2.0

Date: Apr. 7, 2004

TransTOOLS, S.A.

<http://www.transtools.com>

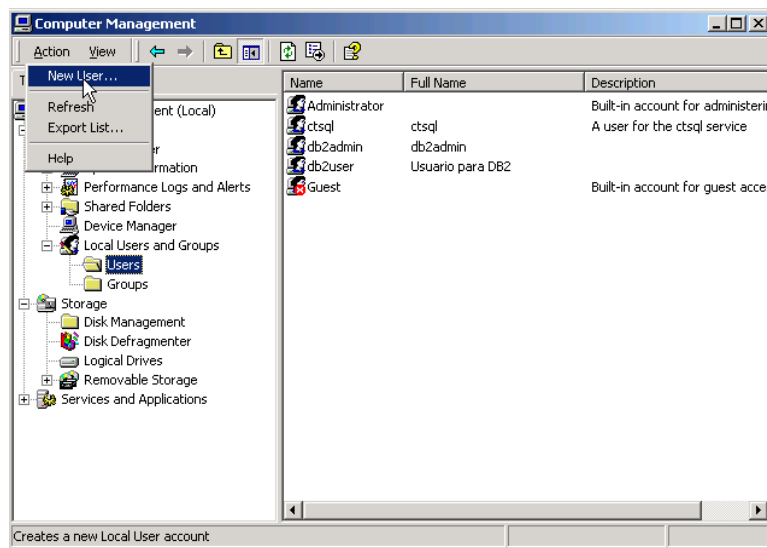
Contents

CHAPTER 1. CREATING A DB2 USER	4
CHAPTER 2. CREATING SYSTEM DATABASE	5
CHAPTER 3. CREATING APPLICATION DATABASE	8

Chapter 1. Creating a DB2 User

Users in the DB2 database engine are the same as those of the operating system. For the purpose of this installation, its necessary to create a operating system user that will be used for the data load into the DB2.

1. Go to "Control Panel → Administrative Tools → Computer Management".
2. Open "Local Users and Groups" and select the folder "Users". In the window beside it can be seen all users of the system.
3. Click on the menu "Action → New User". Give to the user the name "DB2USER" and the description "A user for the DB2".

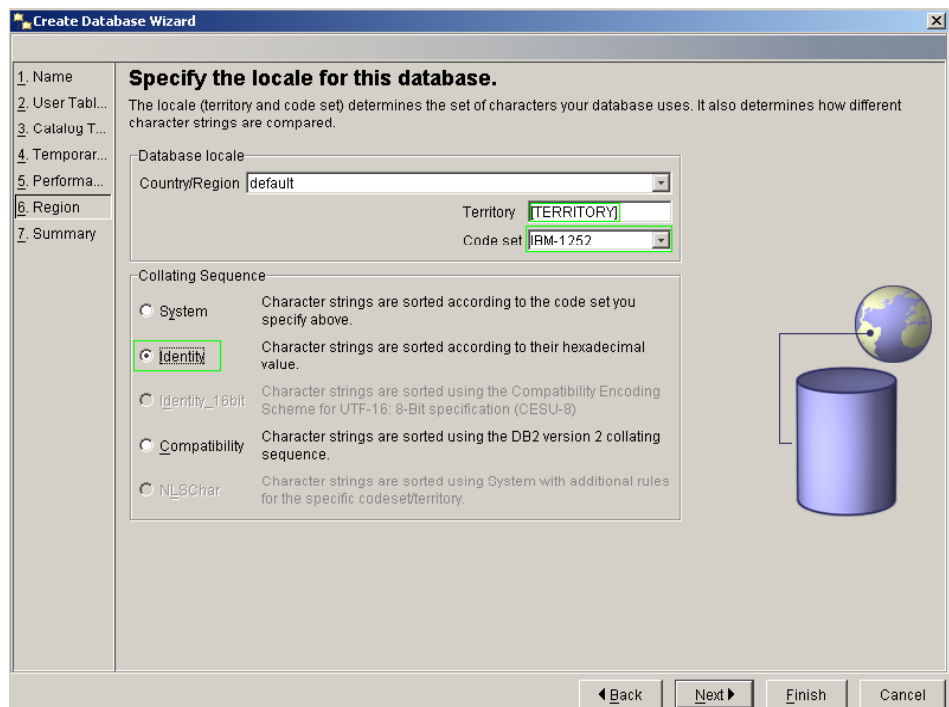
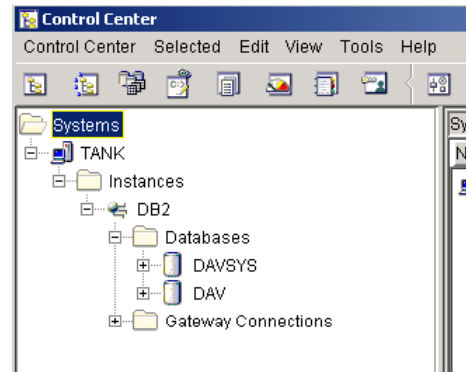


4. In the user configuration option behind, deselect every options and click Create. Finally click Close.

Chapter 2. Creating system database

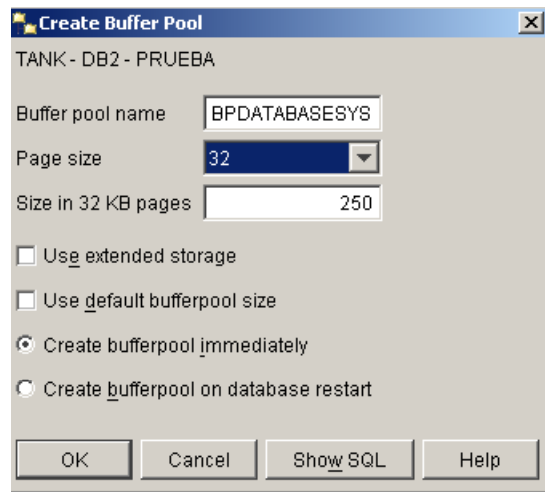
In order to load the data into the DB2 database engine, follow the next steps:

1. Create a database for Caravel System, using the control center that can be found on “Start → IBM DB2 → Control Center”.
2. Click on the “+” sign beside the *hostname*, then the same on “instances”. Now the instances of the database can be seen.
3. Open the Instance in which the databases will be created.
4. Right-Click over the “Databases” folder. Then on the emergent menu click on “Create → Database Using Wizard”.
5. On the new window fulfill the field “Database Name” with the *databaseNameSYS* desired. During the database configuration, in the 6th step — **Region**—, has to be selected the **Identity Collating Sequence** option. Code set must be IBM-1252, if your version doesn't show it as an option, just overwrite the value.



6. Click the "+" sign on the "databaseNameSYS". Right-Click on the folder "Buffer Pools". Then on the emergent menu click on "Create".

7. On the new Window fulfil the field "Buffer pool name" with the name "BPDATA-BASESYS". And the field "Page size" with "32"

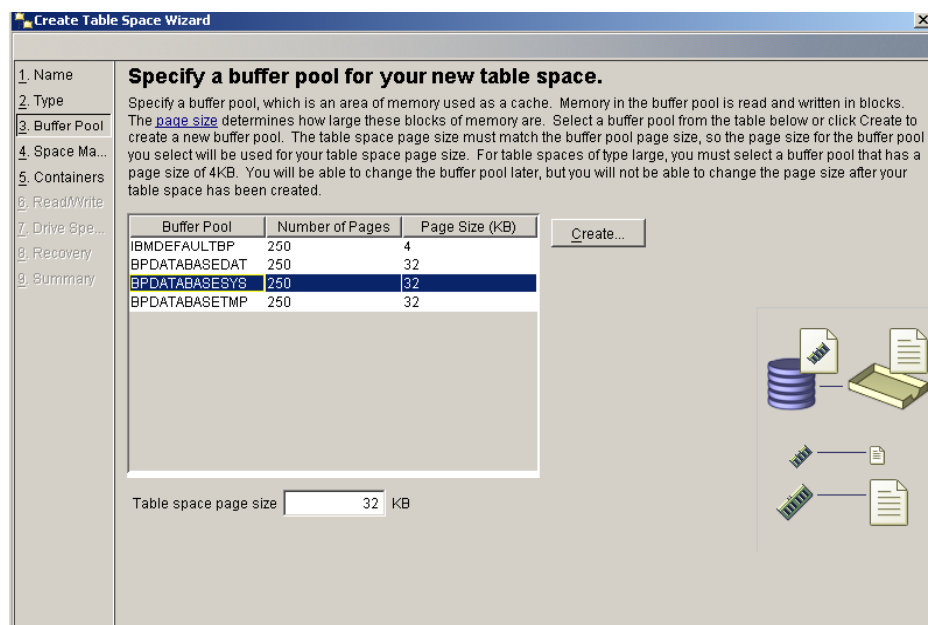


8. Restart the Database instance in which the database has been created, by Right-Clicking on the instance folder. Then on the emergent menu select the option "STOP". After this, select on the same emergent menu the option "START".

9. Create a table space by clicking the "+" sign on the "databaseNameSYS". Right-Click on the folder "table spaces". Then on the emergent menu select the option "Create → Table Space".

10. Fill out the field "Table space name" with the value "TSDATABASESYS" and type *Regular*.

11. Click on Advance, and select the created buffer pool "BPDATABASESYS".



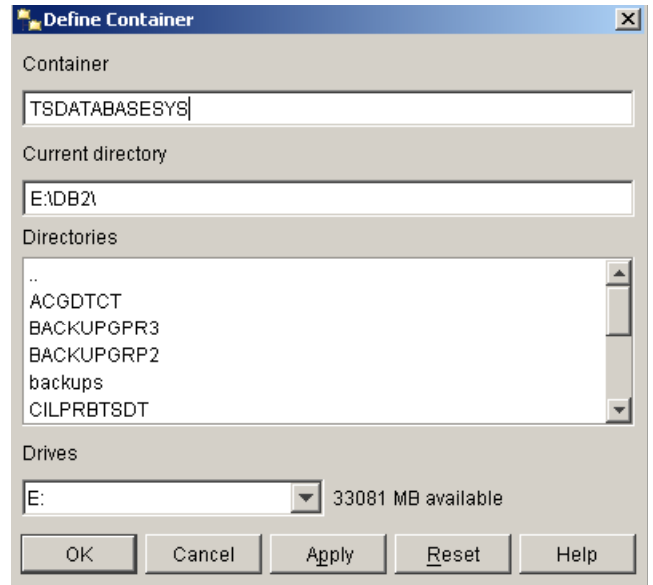
12. Click on Add, then double-click on the folder "DB2", and finally on the field "Container" the value "TSDATABASESYS". Then click Ok to continue.

13. Add a new user to the table space already created, by Right-Clicking on the table space "TSDATABASESYS" and select "Privileges".

14. Click on the button Add User, then type the name "DB2USER". Finally click OK.

15. Select the user "DB2USER" and click on Grant All. If the operation is developed with success the user will have a double green stick. Click Ok to finish.

16. Now, in order to increase the heap and control size for the *databaseNameSYS*, Right-Click on the *databaseNameSYS* and select "Configure parameters" from the emergent menu.



17. Place in the "Performance" group parameters. The next parameters have to be modified:

- "Application heap size" (APP_CTL_HEAP_SZ) parameter has to be changed its value to "10000".
- "Number of private memory pages available" (APPLHEAPSZ) parameter has to be changed its value to "10000".
- "Database heap size" (DBHEAP) parameter has to be changed its value to "10000".

18. Place in the "Logs" group parameters. The next parameters have to be modified:

- "Log file size" (LOGFILSIZ) parameter has to be changed its value to "2500".
- "Primary log files" (LOGPRIMARY) parameter has to be changed its value to "10".
- "Secondary log files" (LOGSECOND) parameter has to be changed its value to "10".

19. Restart the database server by Right-Clicking the instance that contains the new database, and selecting Stop to disconnect the server. On the new window mark the option "Disconnect all applications" and click OK. Finally select Start on the same menu to restart the database server.

Chapter 3. Creating application database

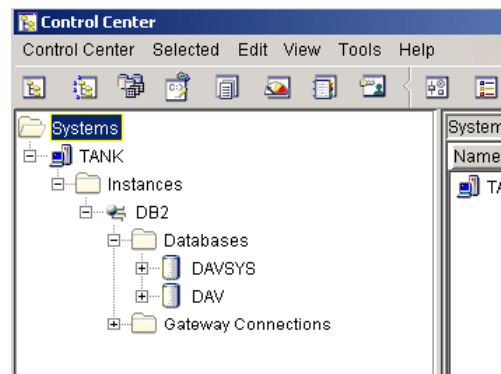
In order to load the data into the DB2 database engine, follow the next steps:

1. Create a database for Caravel System, using the control center that can be found on "Start → IBM DB2 → Control Center".

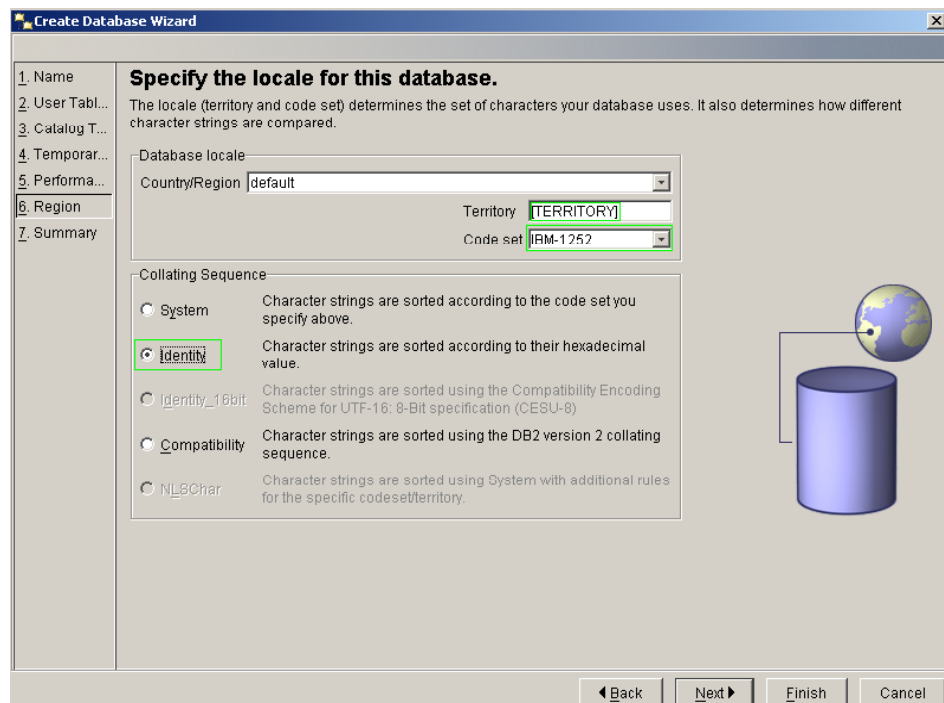
2. Click on the "+" sign beside the *hostname*, then the same on "instances". Now the instances of the database can be seen.

3. Open the Instance in which the databases will be created.

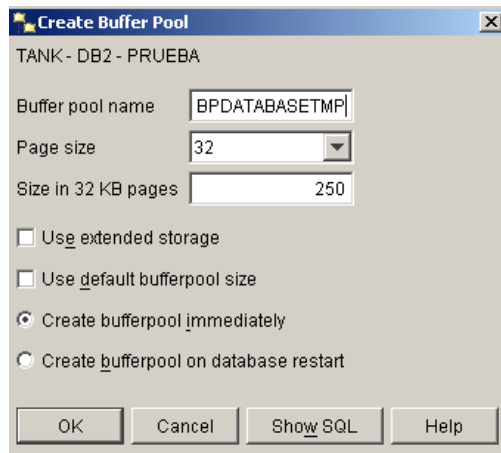
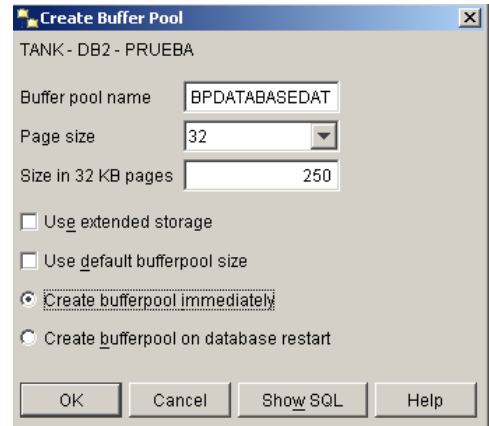
4. Right-Click over the "Databases" folder. Then on the emergent menu click on "Create → Database Using Wizard".



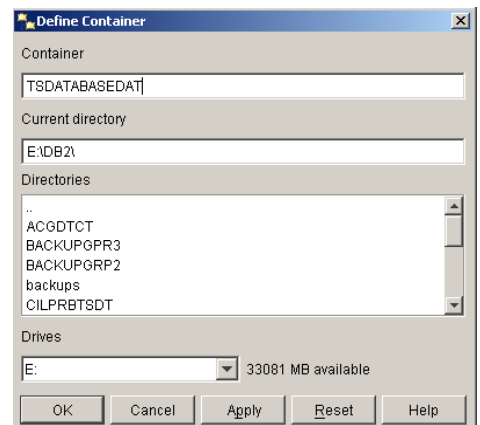
5. On the new window fulfill the field "Database Name" with the *databaseNameDAT* desired. During the database configuration, in the 6th step — **Region**—, has to be selected the **Identity Collating Sequence** option. Code set must be IBM-1252, if your version doesn't show it as an option, just overwrite the value.



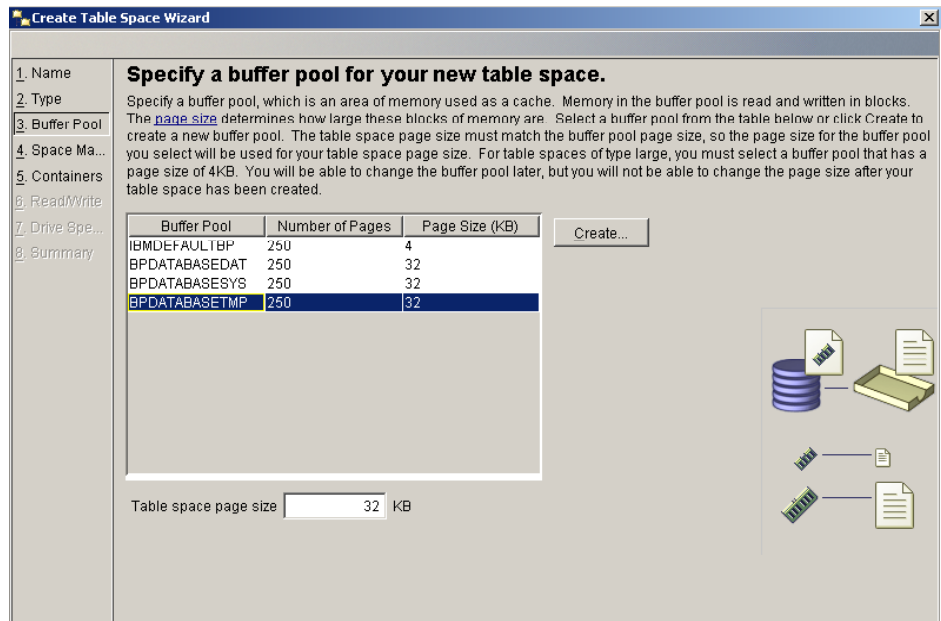
6. Click the "+" sign on the "databaseNameDAT". Right-Click on the folder "Buffer Pools". Then on the emergent menu click on "Create".
7. On the new Window fulfil the field "Buffer pool name" with the name "BPDATABASEDAT". And the field "Page size" with "32"
8. Create another buffer pool with the name "BPDATABASETMP". With the field "Page size" with "32".



9. Restart the Database instance in which the database has been created, by Right-Clicking on the instance folder. Then on the emergent menu select the option "STOP". After this, select on the same emergent menu the option "START".
10. Create a table space by clicking the "+" sign on the "databaseNameDAT". Right-Click on the folder "table spaces". Then on the emergent menu select the option "Create → Table Space".
11. Fill out the field "Table space name" with the value "TSDATABASEDAT" and type *Regular*.
12. Click on Advance and select the created buffer pool "BPDATABASEDAT".
13. Click on Add, then double-click on the folder "DB2", and finally on the field "Container" the value "TSDATABASEDAT". Then click Ok to continue.
14. Add a new user to the table space already created, by Right-Clicking on the table space "TSDATABASEDAT" and select "Privileges".



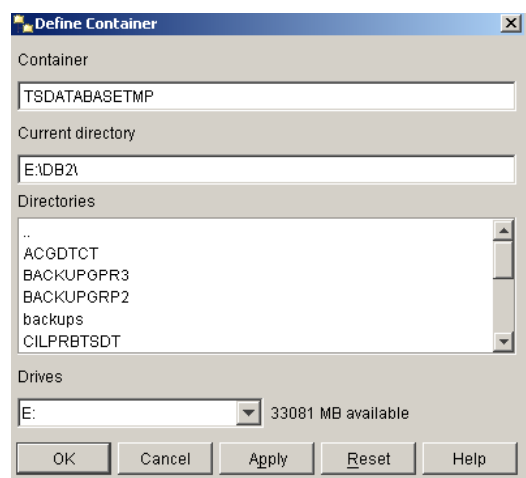
15. Click on the button Add User, then type the name "DB2USER". Finally click OK.
16. Select the user "DB2USER" and click on Grant All. If the operation is developed with success the user will have a double green stick. Click Ok to finish.
17. Fill out the field "Table space name" with the value "TSDATABASETMP" and type *System Temporary*.
18. Click on Advance and select the created buffer pool "BPDATABASETMP".



19. Click on Add, then double-click on the folder "DB2", and finally on the field "Container" the value "TSDATABASETMP". Then click Ok to continue.
20. Now, in order to increase the heap and control size for the *databaseNameDAT*, Right-Click on the *databaseNameDAT* and select "Configure parameters" from the emergent menu.

21. Place in the "Performance" group parameters. The next parameters have to be modified:

- "Application heap size" (APP_CTL_HEAP_SZ) parameter has to be changed its value to "10000".
- "Number of private memory pages available" (APPLHEAPSZ) parameter has to be changed its value to "10000".
- "Database heap size" (DBHEAP) parameter has to be changed its value to "10000".



22. Place in the “**Logs**” group parameters. The next parameters have to be modified:
 - “Log file size” (LOGFILLSIZ) parameter has to be changed its value to “**2500**”.
 - “Primary log files” (LOGPRIMARY) parameter has to be changed its value to “**10**”.
 - “Secondary log files” (LOGSECOND) parameter has to be changed its value to “**10**”.
23. Restart the database server by Right-Clicking the instance that contains the new database, and selecting Stop to disconnect the server. On the new window mark the option “Disconnect all applications” and click OK. Finally select Start on the same menu to restart the database server.